



➤ Tea Room

Our tea room is 5 star rated by the local authority and serves freshly prepared food to order.

Picnics welcome – large al fresco area outside with tables and benches.

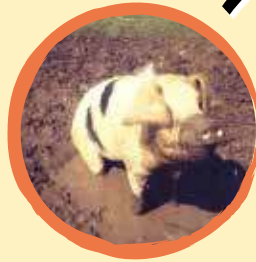
Our tea room is open to all – not just our visitors... try our grilled chicken wraps, avocado and rocket on ciabatta plus the always popular jackets, bacon rolls, home produced hot roast pork rolls, burgers, salads, home made cakes, big Lincolnshire breakfasts, morning coffee, afternoon teas, sandwiches, childrens meals, and proper dairy ice cream – worth a try!

We use locally sourced food and suppliers, and we support The Tastes of Lincolnshire.

We can happily cater for group bookings by prior arrangement. Please book large food orders in advance (further details available when booking).

➤ Toddler Group

Runs term time only on Tuesdays 1pm till 3.30pm and Thursday 10am till 12.30pm – £6.75 admits 2 adults of the same family plus as many pre-school children as you have – childminders welcome – includes a tea or coffee and a biscuit.



➤ Opening Times

Tuesday 9th February to 31st October

- We are **closed** on Mondays during term time – open every day during school holidays
- February, March and October 10am till 4pm (last entry 2.30pm)
- April to September 10am till 5pm (last entry 3.30pm)

Closed November, December and January

➤ Admission

£6.75 per person

Arrivals before 11am are Early Birds at £5.75 each

Concessions £6.00

(and allow 1 free carer with each registered disabled entry, additional carers are £5.00 each)

Children ages 1 and 2 are free of charge

See web for additional discounted entries for NHS staff

Guide Dogs welcome – no other dogs permitted – please leave your dog at home for the well being of our animals.

➤ Travel Directions

40 minutes from Skegness and 35 minutes from Lincoln. For coastal visitors head for Manby and follow the brown signs. All other visitors – head for Louth and follow Town Centre signs leaving the town on Eastfield Road, past the Police Station and Fire Station – approximately 2 miles on the left hand side you will find us.



Design & Print by Cupit Print - www.cupitprint.co.uk

Rushmoor Country Park
Louth Road, North Cockerington,
Nr Louth LN11 7DY

01507 327184

www.rushmoorpark.co.uk

Member of
Lincolnshire Farm
and Countryside
Attractions

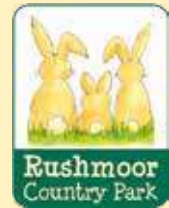


Member of
the National
Farm Attractions
Group



www.rushmoorpark.co.uk





Lots of animals to stroke and hold - bottle feeding baby lambs in the Spring
 Pony rides plus hawk and owl flying demos (subject to weather)



Toilets
 Hand-wash Station



2016 Events

> **Mother's Day**
 Sunday 6th March

A plant for every Mum who comes to the park with her children – and free entry for Mums too.

> **Easter**
 Good Friday 25th March and
 Easter Monday 28th March

Easter Picture Competition – every child who brings a handmade Easter picture – be it religious or an Easter bunny or chick or chocolate – anything you enjoy about Easter – will receive a bag of mini eggs – the best picture for each day will be framed and hung in our tea room for 2016 and the 2 winners will receive a season ticket for the rest of the year for a family of 4.

Easter Sunday 27th March
 Has to be an Easter Egg Hunt... starts at 10am and finishes when all the eggs have gone!

> **May Day Holiday**
 Monday 2nd May

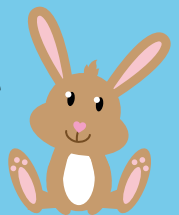
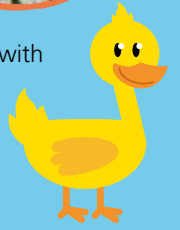
Warren the rabbit is doing his own census of rabbits at Rushmoor – but he needs it checking – so can you tell us how many rabbits we have here today?

> **Spring Bank Holiday**
 Monday 30th May

How many legs? Count how many legs our lambs have as we bottle feed!

> **Father's Day**
 Sunday 19th June

Today is Dad's Day... treat him to Free Entry – be here before 2pm though to be sure and a bacon bun for him too on us when he gets here.



Arrive before 11am & hand in this leaflet for the Early Bird price of £5.75 per person*
* not available with any other offer